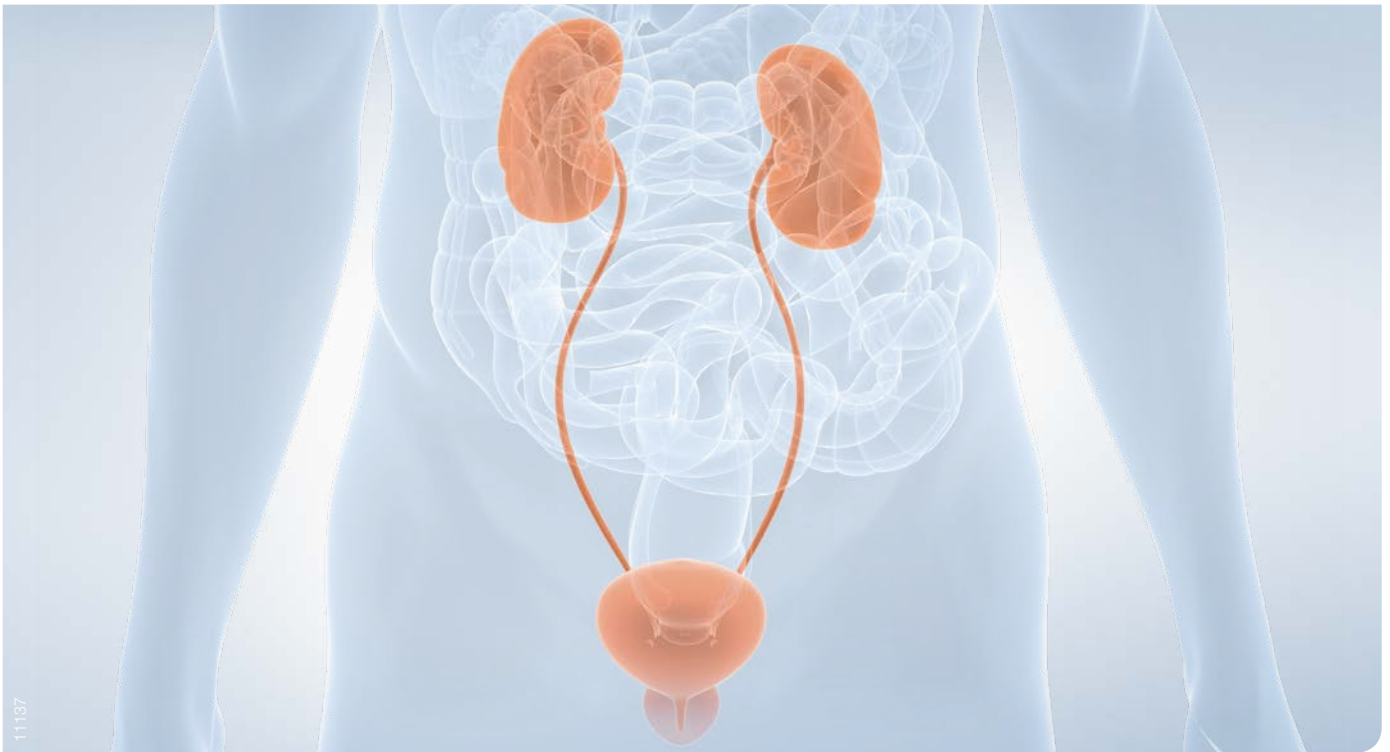


## VISERA ELITE – THE UROLOGY IMAGING PLATFORM

**Brilliant Full-HD Resolution Improves Diagnosis and Treatment.**



## THE VISERA ELITE PLATFORM: BRILLIANT VISION – HIGHER PERFORMANCE

State-of-the-art imaging techniques in the operating room deliver true-to-life image quality in crystal-clear detail. The brilliant full-HD resolution is the basis for the high accuracy in urological diagnostic and therapeutic procedures such as BPH, bladder cancer resection, ureteroscopy, and cystoscopy. The innovative Narrow Band Imaging (NBI) technology allows for enhanced visibility of vessel structures potentially leading to improved detection of carcinoma in situ in bladder cancer.

### **VISERA ELITE: The Urology Imaging Platform**

- **Advanced, full HD for improved color reproduction never before seen in an operating room**
- **Increased light output (20% brighter compared to prior generation) for advanced Narrow Band Imaging (NBI) suitable for NMIBC detection**
- **With filters for PDD (Photodynamic Diagnosis)**
- **Versatile platform that can be shared among multiple surgical specialties**
- **Upgradeable to 3D**

### **VISERA ELITE: Supports Urologists in All Procedural Needs**



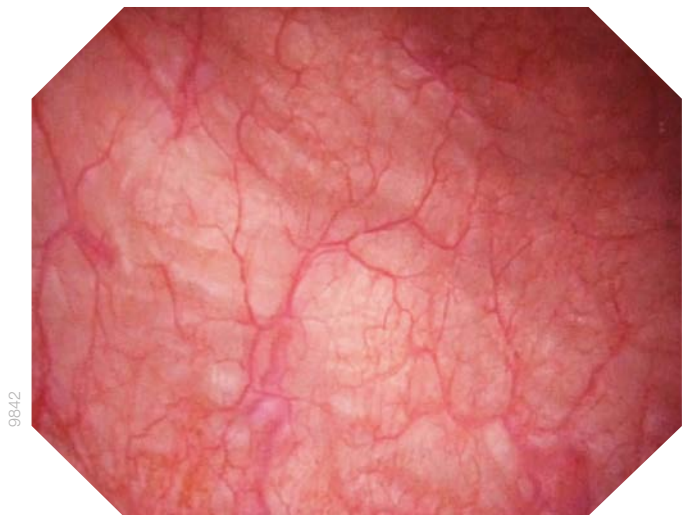


# CYF-VH: THE WORLD'S FIRST FLEXIBLE HD CYSTO-NEPHRO-VIDEOSCOPE



## HD and Full-Screen Capabilities – for the First Time Ever in Flexible Cystoscopy

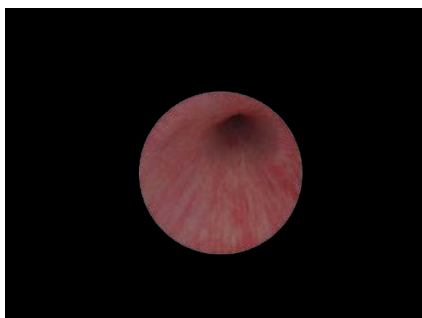
- Increased light output (20% brighter) for advanced Narrow Band Imaging (NBI)
- Enhanced visibility of superficial capillary and mucosal vessel system
- Potentially higher and improved detection rate of carcinoma in situ



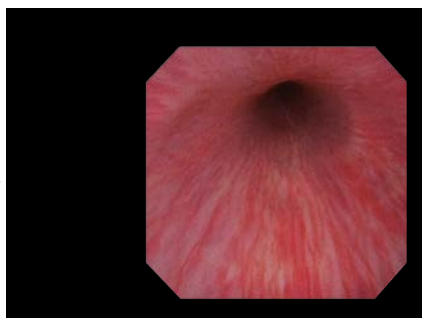
*A 20% brighter image improves the detection and diagnosis of suspicious tissue areas.*

## Evolution in Cystoscopy

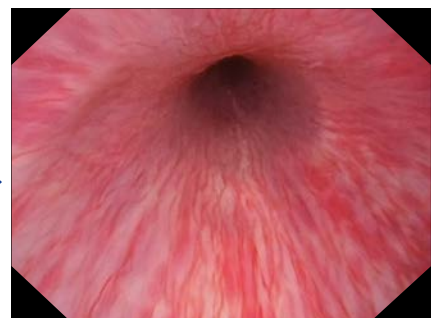
Olympus is a pioneer in the development of flexible endoscopic instrumentation for the examination of the urinary tract. Coming from fiberscope cystoscopy with a small image with low resolution and brightness (picture 1), technological advances led to chip-on-the-tip cystoscopes (picture 2) that has now achieved excellence in HD flexible cystoscopy by providing a 20% brighter image compared to the first series of chip-on-the-tip cystoscopes (picture 3).



Picture 1: Fiber cystoscope



Picture 2: SD video cystoscope



Picture 3: HD video cystoscope



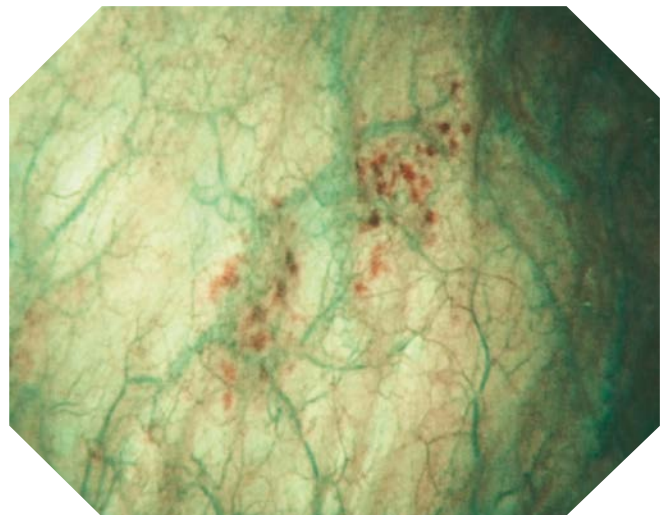
# HD NBI: THE ADVANCED DIAGNOSTIC OPTION IN BLADDER CANCER FOLLOW-UP

## Proven Clinical Evidence for Narrow Band Imaging in NMIBC Management

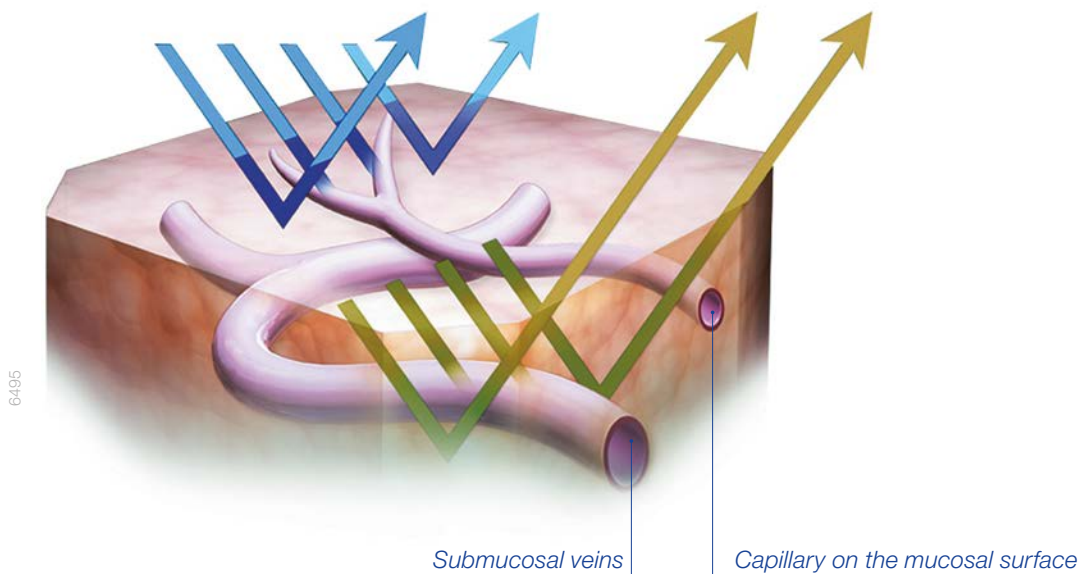
Narrow Band Imaging (NBI) is an optical image-enhancement technology that improves the visibility of vessels and other tissue on the mucosal surface by filtering light wavelengths. Cauberg et al. found a higher tumor detection rate for HD-NBI (94.7%) in comparison to white light (79.2%).<sup>1</sup>



*Excellent view of mucosal and vessel structures even with white light.*



*NBI filters the white light and improves the visual contrast of mucosal and vessel structures.*



<sup>1</sup> Cauberg et al., *Narrow Band Imaging Cystoscopy Improves the Detection of Non-Muscle-Invasive Bladder Cancer*, *Urology* 2010; 76:658-663

## URF-V2: HIGHEST VIDEOSCOPE IMAGE QUALITY IN SUPERSLIM 8.4 FR SHAFT

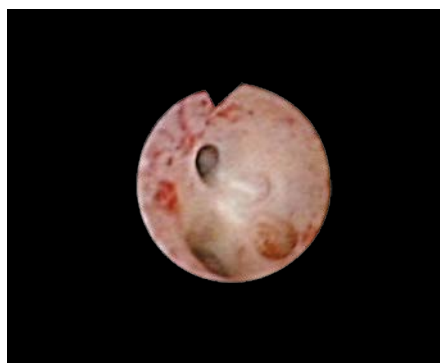


### 8.4 Fr Slim and Stiff Shaft for Facilitating Access and Maneuverability

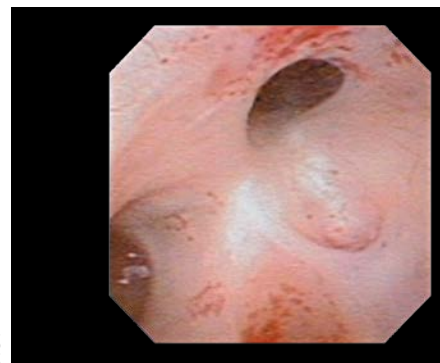
- Slim URF-V2 fits into 10/12 Fr access sheath allowing for access in tight ureters
- Using the URF-V2 in combination with a 12/14 Fr access sheath ensures the clearest visualization thanks to improved flow
- Increased shaft stiffness for improved steering of the ureterscope in order to reach lower pole calyx easily

### Outstanding Vision

- Significantly larger image compared to conventional Olympus fiberscope
- Better vision allows for safe laser activation leading to approximately 20% savings in procedure time



Conventional fiberscope image URF-P5



Chip-on-the-tip ureterscope image URF-V2

# EXTEND THE LIMITS OF FLEXIBLE URETEROSCOPY: FEASIBLE FOR MANAGEMENT OF LARGE STONES



“ The digital technology for flexible ureteroscopy is one of the major improvements for a better treatment of kidney stones and urothelial tumor ablation. ”

*Prof. Olivier Traxer, Tenon Hospital, Paris, France*

## Improved Maneuverability to Reach Everywhere

### Unique Insertion Tube Rotation for More Comfort

The 120° rotation function allows the operator to change the shaft's angle by rotating a ring on the handle. This potentially allows for longer laser activation making treatment of large stone burdens feasible, more precise, and more comfortable.



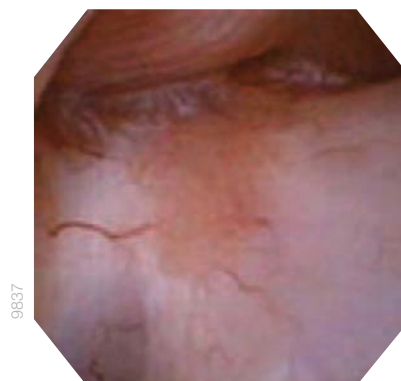
### 275° Wide Angulation Range

Deflection capabilities of 275° up and down allow for outstanding visualization of lower renal calyx as well as upper and middle calyces.

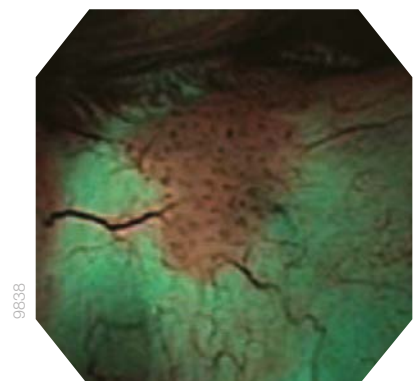
## NBI for More Accurate Tumor Detection with NBI

### Tumor

NBI as optical image enhancement technology is of substantial help in better identifying upper tract tumors due to improved visibility of vessel structures.



*White light*



*NBI*

## HD UROLOGY CAMERA HEAD: 65 GRAMS OF HIGH DEFINITION AT YOUR FINGERTIPS



### Crystal Clear, Brilliant, and True to Life

- Details and colors are sharp and true to life
- Significantly improved color reproduction compared to previous generation
- The advanced option for HD resection of BPH and bladder cancer





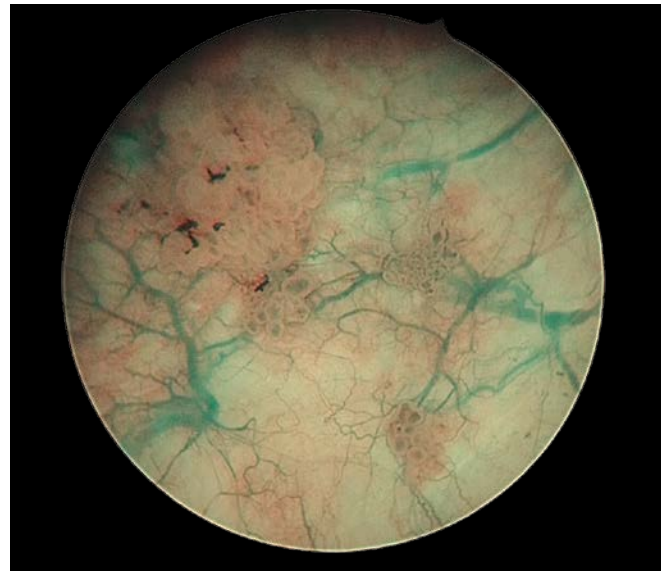
# HD CAMERA HEAD WITH NARROW BAND IMAGING TECHNOLOGY AT THE PUSH OF A BUTTON

## HD Camera Head with NBI – a Unique Combination for Bladder Cancer Resection

- Combination of HD and NBI delivers 20% brighter light compared to earlier camera head systems
- Potentially higher and improved detection rate of carcinoma in situ due to improved visibility of vessels on the mucosal surface
- Proven evidence: HD-NBI reduces the recurrence risk of NMIBC by at least 10% at one year<sup>1</sup>



White light



Visibility of vessels and mucosal surface improved by NBI

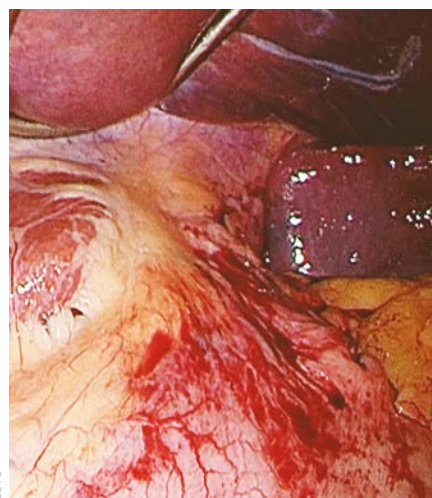
## Ultralight and Easy to Operate

- Only 65 grams – the weight of a fountain pen
- Ergonomic design and high maneuverability to make even long procedures comfortable
- Programmable remote switches at the cable for less shaking, more control, and added convenience



<sup>1</sup> Naselli et al., A Randomized Prospective Trial to Assess the Impact of Transurethral Resection in Narrow Band Imaging Modality on Non-Muscle-Invasive Bladder Cancer Recurrence, *European Urology* 2012; 61:908-913

## ENDOEYE HD II 10 MM: THE NEXT-GENERATION VIDEO LAPAROSCOPE



### Fog-Free Function

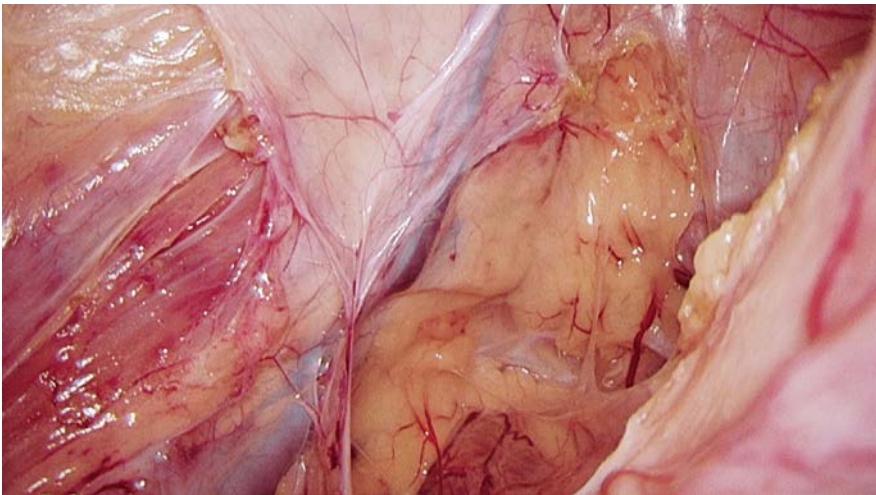
- Crystal-clear view for immediately starting surgical procedures
- No cover glass fogging during the entire procedure

### Autoclavability

- All surgical endoscopes from Olympus are autoclavable.
- Including the new 5 mm and the 10 mm ENDOEYE FLEX



# ENDO-EYE HD II 10 MM: VIVID VISUALIZATION, COMFORTABLE CONTROL

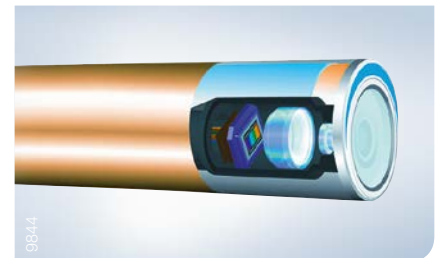


## Next-Generation HD

- 10 mm HDTV with best image quality and highest resolution
- New 5 mm HDTV for significantly expanded clinical possibilities in laparoscopic surgery

## Chip-on-the-tip

- Superior illumination and maximum contrast
- Bright and crystal-clear images
- Colors are sharp and true to life

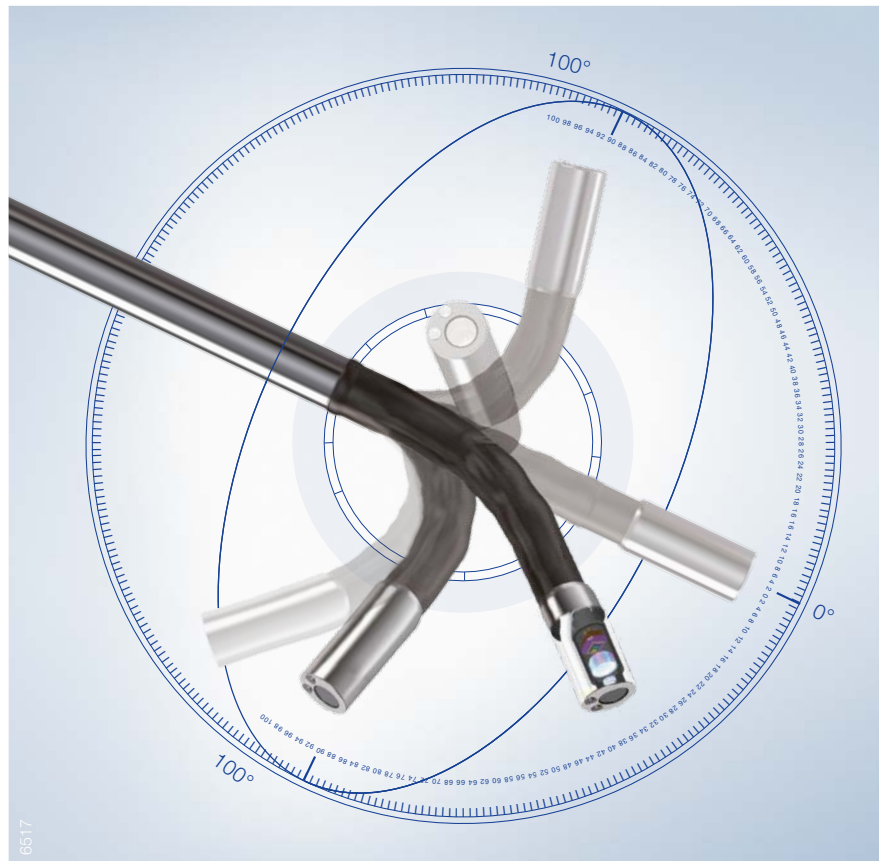


## Focus-Free

- Consistent and excellent depth of field from the center to the periphery



# ENDOEYE FLEX HD 5 MM: INNOVATION IN LAPAROSCOPY – DESIGNED TO REACH EVERYWHERE



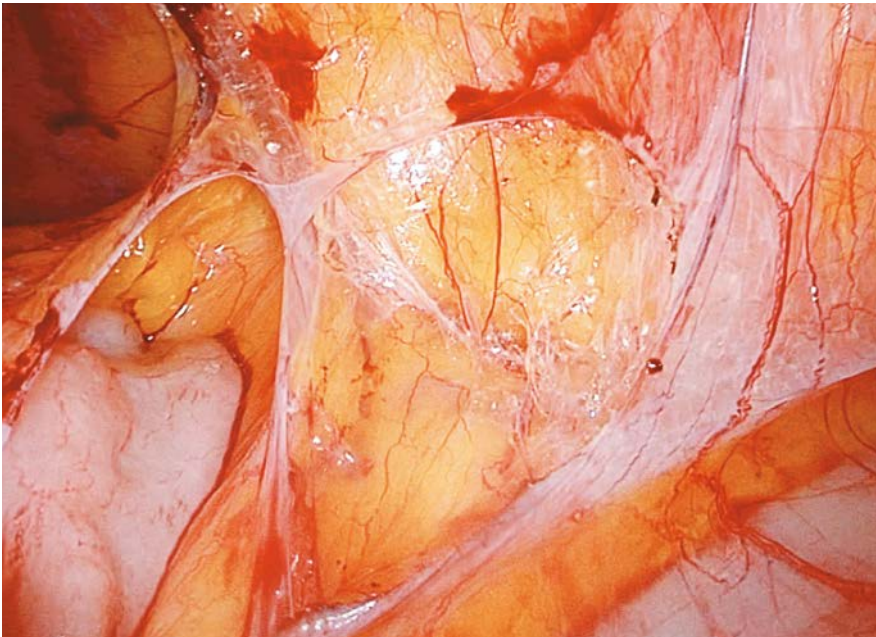
## Optimum Angulation

- World's first 5 mm video laparoscope in HD quality for maximum patient comfort and safety
- Designed to reach everywhere: can bend 100 degrees up and down in four directions
- Organs and tissues can be thoroughly examined head-on, from above, and from behind





## 3CCD CAMERA HEAD: EXCEPTIONAL IMAGE QUALITY AND CONVENIENT REMOTE CONTROL



### Full HD 3CCD

- Delivers crystal-clear image in HD quality
- Supports your procedures with finer details than ever before
- Compatible with conventional Olympus laparoscopes

### Convenient handling

- Single-Handed automatic focus and zoom by pressing a button
- Three programmable switches for facilitated control of frequently used functions



# VISERA ELITE PORTFOLIO OVERVIEW

## Video Processor and Light Source

**N3643860** VISERA ELITE – OTV-S190, video processor



**N3643950** VISERA ELITE – CLV-S190, light source



## Flexible Videoscopes

**N3828460** CYF-VH – flexible video cysto-nephroscope

**N3828560** CYF-VHA – flexible video cysto-nephroscope with aspiration

**N3828660** CYF-VHR – flexible video cysto-nephroscope with backward angulation



**N4506330** URF-V2 – flexible video ureteroscope

**N4506430** URF-V2R – flexible video ureteroscope

**N4501260** URF-V – flexible video ureteroscope



## Video Laparoscopes

**WA50040A** ENDOEYE II – HD in 10 mm with 0°

**WA50042A** ENDOEYE II – HD in 10 mm with 30°



**WA50050A** ENDOEYE II – HD in 5.4 mm with 0°

**WA50052A** ENDOEYE II – HD in 5.4 mm with 30°



**N3828060** ENDOEYE FLEX 5 mm – HD with bendable tip



## Camera Head

**N4488560** CH-S190-08-LB – HD urology ultraight camera head



**N3804860** 3CCD CH-S190-XZ-E – laparoscopy camera head



**Monitor**

N5374360                      OEV262H – Olympus high-definition LCD monitor, 26"



**Insufflator**

N3829670                      UHI-4 – insufflator



**Full HD Recording Platform**

N3808460                      IMH-10 – Blu-ray and HDD recording platform



N3808560                      IMH-20 – Blu-ray and HDD recording platform



**Trolley**

K10021613                      VISERA ELITE – WM-NP2 mobile workstation



# VISERA ELITE – THE UROLOGY IMAGING PLATFORM

E0491969 · x.000 · 07/14 · PR

Specifications, design, and accessories are subject to change without any notice or obligation on the part of the manufacturer.

**OLYMPUS**

**OLYMPUS EUROPA SE & CO. KG**

Postbox 10 49 08, 20034 Hamburg, Germany  
Wendenstrasse 14–18, 20097 Hamburg, Germany  
Phone: +49 40 23773-0, Fax: +49 40 233765  
[www.olympus-europa.com](http://www.olympus-europa.com)