

EVIS EXERA III VIDEOCOLONOSCOPE

# PCF-H190TL/I

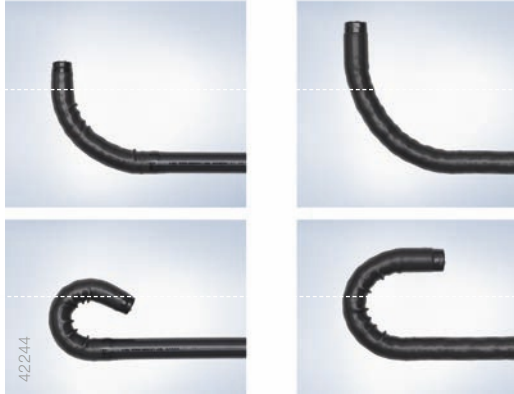
**High-definition colonoscope facilitating endoscopic treatment  
through excellent maneuverability**



**Main Features**

**Short bending for better access to lesions**

With a shorter bending section, the PCF-H190TL/I provides better handling in the intestine. Combined with the 210° up angulation, the scope offers easier lesion approachability.

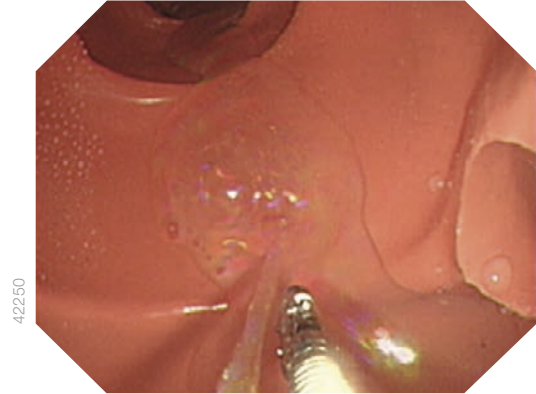


PCF-H190TL/I

PCF-H190L/I

**Appropriate channel layout**

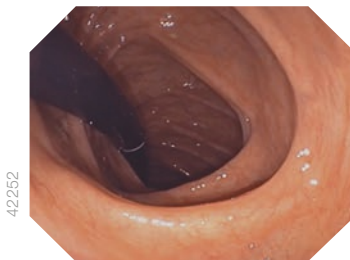
The layout allows for smooth operation of both the water-jet function and any treatment such as stopping bleeding.



42250

**HDTV and NBI**

With its HDTV image quality and brighter NBI, the PCF-H190TL/I contributes to higher treatment accuracy. High confidence optical diagnosis facilitates appropriate treatment decisions and accurate delineation of lesions.



42252

White Light

**Improved insertability**

The PCF-H190TL/I incorporates unique proprietary OLYMPUS technologies, realizing easier scope insertion with minimized patient discomfort.



42248

EVIS EXERA III Videocolonoscope OLYMPUS PCF-H190TL/I

**Specifications**

<b>Optical System</b>	Field of view (Maximum diagonal angle)	140°	<b>Instrument Channel</b>	Direction from which EndoTherapy accessories enter and exit the endoscopic image		
	Direction of view	0°(Forward viewing)		<b>Water Jet</b>	Direction of water jet in field of view	
	Depth of field	2–100 mm			<b>Bending Section</b>	Angulation range
Distal end outer diameter	9.8 mm	<b>Total Length</b>	L: 2005 mm, I: 1655 mm			
Distal end enlarged			<b>Compatible EVIS EXERA III System</b>	Video System Center OLYMPUS CV-190 Xenon Light Source OLYMPUS CLV-190		
<b>Insertion Section</b>						
	Insertion tube outer diameter	10.5 mm				
	Working length	L: 1680 mm, I: 1330 mm				
<b>Instrument Channel</b>	Channel inner diameter	3.2 mm				
	Minimum visible distance	4 mm from the distal end				

Specifications, design, and accessories are subject to change without any notice or obligation on the part of the manufacturer.