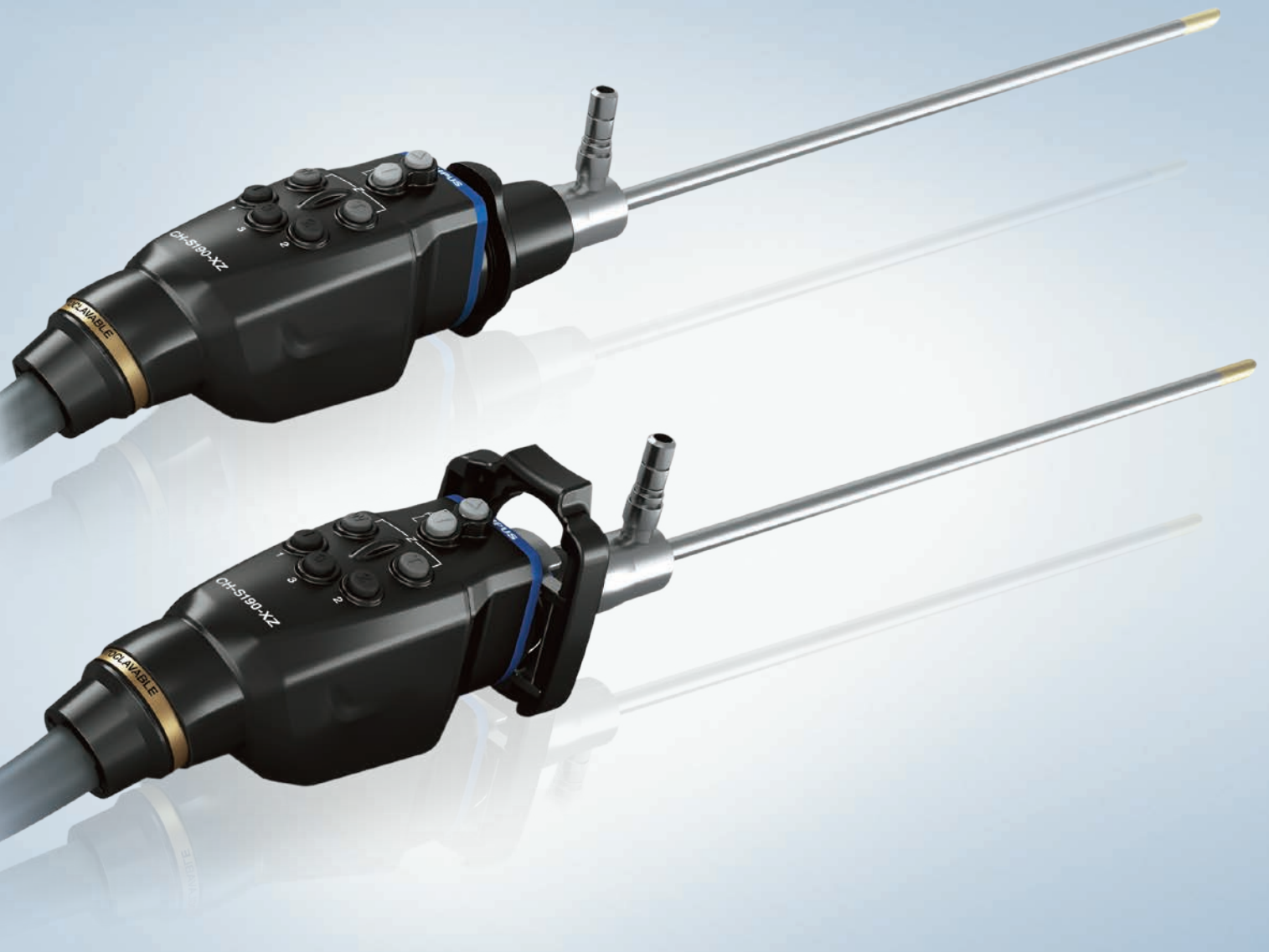


# OLYMPUS

Your Vision, Our Future

## HD AUTOCLAVABLE CAMERA HEAD

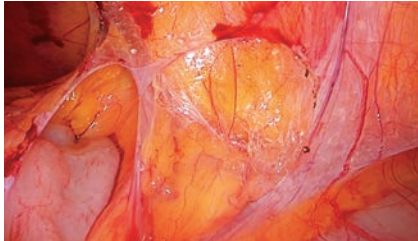
Full HD 3CCD camera head.



## Main features

### Full HD 3CCD

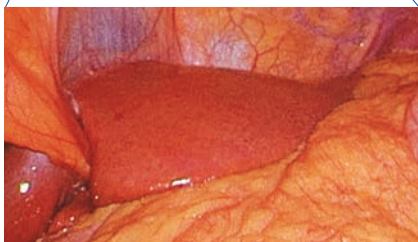
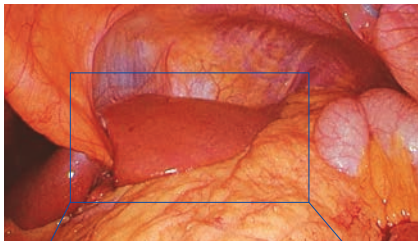
Full HD 3CCD delivers high definition and exceptional image quality supporting your operation with finer details.



### Enhanced resolution and control

Offers full HD resolution with excellent color reproduction. The camera head incorporates power zoom and power focus that you can control with one hand.

Normal



1.8x

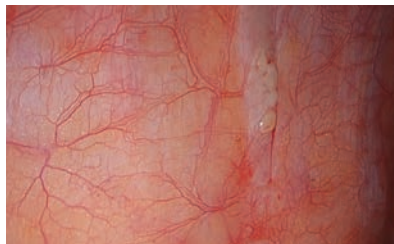
### Autoclavability

Autoclavable full HD 3CCD camera head provides a cost-effective reprocessing option.

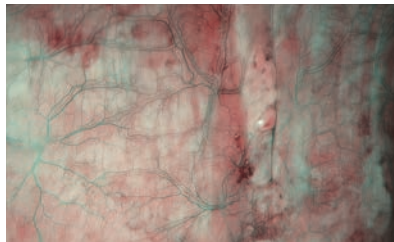


### NBI (Narrow band imaging)

NBI is a proprietary optical image enhancement technology that is only available on Olympus products. NBI enhances the visualization of vessels and other tissues on the mucosal surface and is 20% brighter compared to previous models.



White light



NBI

### Three fully programmable remote switches

Three switches on the control section allows you to program frequently used functions for convenient remote control.



## Lineup

**HD autoclavable camera head**  
CH-S190-XZ-E/CH-S190-XZ-Q

### Specifications

#### Size

<b>Camera head</b>	<b>CH-S190-XZ-E</b>
	Eyepiece type: 50 x 63 x 142 mm
	<b>CH-S190-XZ-Q</b>
	Quick lock type: 45 x 58 x 161 mm

<b>Cable</b>	ø 6.8 mm x 3 m
--------------	----------------

#### Weight

<b>Camera head</b>	350 g
--------------------	-------

#### Observation

<b>Pickup system</b>	0.85 cm/0.33 inches solid-state image pickup
----------------------	---

<b>Magnification ratio</b>	Focal distance f=15.8 – 31.3 mm
----------------------------	------------------------------------

<b>HDTV signal output</b>	HD-SDI output (1080i), DVI output (1080p)
---------------------------	--

**Classification** (electro-magnetic equipment)

<b>Degree of protection against electric shock</b>	Type BF
--	---------

<b>Degree of protection against explosions</b>	The product should be kept away from flammable gases.
--	---

#### Cleaning/disinfection/sterilisation

<b>Cleaning/disinfection</b>	Immersible in disinfectant solution.
------------------------------	--------------------------------------

<b>Sterilisation</b>	Autoclave/ETO/Sterrad
----------------------	-----------------------



CH-S190-XZ-E



CH-S190-XZ-Q

Specifications, design and accessories are subject to change without any notice or obligation on the part of the manufacturer.